

## 2010 NJ Elementary & Junior High Honor Choirs

NJ - Music Educators Association & American Choral Directors Association

### ☺ *General Information* ☺

The New Jersey Music Educators Association in cooperation with the New Jersey American Choral Directors Association is proud to announce the seventeenth annual statewide Honor Choir program for outstanding elementary and junior high vocalists in grades 4 through 9. Once again, two performing ensembles will be formed:

**The NJ Elementary Honor Choir (grades 4-6, treble voicing)**

**The NJ Junior High Honor Choir (grades 7-9, mixed voicing)**

#### **DIRECTOR RESPONSIBILITIES**

Any church, school, or community choir director who is a member of MENC and/or ACDA is eligible to sponsor students for membership in the Honor Choirs. Students must be residents of New Jersey.

There is a limit of **16 student applicants** from each school, church, or community chorus for each honor choir.

The director will be responsible for:

- a. supervising the preparation of application & audition materials and sending all materials in one mailing
- b. ensuring that students are musically prepared for the first rehearsal
- c. coordinating efforts with the parents and sponsoring organization to assure that the singer is financed and has transportation provided and has all required paper work completed and submitted according to guidelines
- d. Rehearsal & Festival Days: **attending both days in their entirety and assisting is required of the director or a pre-approved member of either NJMEA or NJACDA**

#### **APPLICATION AND REGISTRATION**

All details of this general information, the audition instructions, and the application form have been assembled with extraordinary care by the Honor Choir Committee. To ensure that applications and audition materials will be considered, all directions must be followed exactly as printed. Questions may be addressed to the Honor Choirs Coordinator.

Applicants should submit a fully-completed application, a high-quality audition cassette tape or CD, and an application fee of \$5.00 postmarked by Wednesday, January 13, 2010. Audition results will be emailed following auditions. A hard copy will be mailed to directors, if requested. Registration forms and a \$25.00 student participation fee must be postmarked no later than February 10, 2010.

**Remember:** for this initial application process, submit ONE check for the total amount of \$5.00 application fees for your students. In all cases, checks must be made out to **NJMEA (no school vouchers)**.

**All communications are done through email. Directors must provide a current email address.  
Prompt notification of email address changes is requested.**

#### **STUDENT PREPARATION**

Music will be sent in February, providing ample time in which to learn and memorize the material prior to the first rehearsal. It is expected that teachers will ensure complete student preparation. Student preparation will be monitored at the first rehearsal.

#### **FESTIVAL SCHEDULE**

##### **Saturday, April 24, 2010: REHEARSAL DAY**

The selected choirs will rehearse at Park Middle School, Scotch Plains from 9:00 – 1:00 p.m.

##### **Saturday, May 1, 2010: CONCERT DAY (J.P Case Middle School, Flemington, NJ)**

9:00 am - Full Rehearsals with guest conductors

4:30 pm - Gala Final Concert

**~ All singers must attend both dates for the full duration to be eligible to perform in the concert. There are no exceptions. ~**

#### **HONOR CHOIR COMMITTEES**

**Coordinator:** Debbie Mello - 973-383-4323

**Elementary Manager:**

Janelle Heise

**Junior High Manager:**

Edel Thomas

**NOTE:** The committee will meet on January 22-23, 2010. Audition materials received after this time cannot be considered, even if they are postmarked prior to the January 13, 2010 deadline. It is the responsibility of the director to ensure audition materials arrive prior to the selection committee date.

# 2010 NJ Elementary & Junior High Honor Choirs

NJ - Music Educators Association & American Choral Directors Association

Page 2

## ELEMENTARY Audition Instructions

These directions are for the **ELEMENTARY HONOR CHOIR ONLY**. See the next page for Junior High instructions. Follow these directions exactly. **Failure to adhere to these specific instructions will result in disqualification of the auditioning singer.** Remember that each school or organization may submit up to 16 sets of audition materials. However, care should be taken to only submit tapes which represent a substantial amount of preparation.

### Elementary Honor Choir

#### STARTING PITCHES

(note: mC =middle C)

#### Vocalise

##### Elementary Honor Choir:

Sing the 2 indicated vocalises:

Voice Part	Pitch
------------	-------

Treble I	1. E above mC
	2. C2

Treble II	1. middle C
	2. Bb above mC

#### "Music Alone Shall Live" solo

Sing the solo

(found on the application form)  
with the following starting pitches:

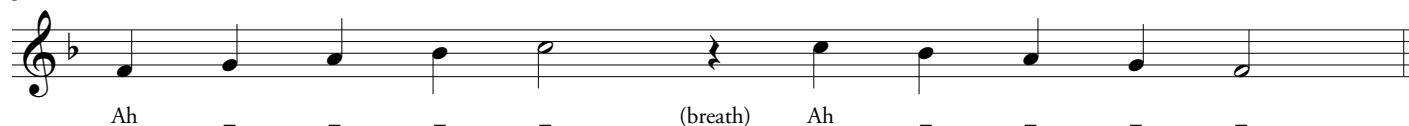
Voice Part	Key	Starting Pitch
------------	-----	----------------

Treble I	Bb	D above C1
Treble II	G	B above mC

- APPLICATION FORM** (see page 4 for Form)
  - Duplicate as needed. Complete thoroughly and legibly.
- PREPARING TO RECORD THE AUDITION CASSETTE/CD**
  - Use only new, quality cassette/cd and quality recording equipment.
  - Only the student's voice may appear on the cassette/cd. At no time may sounds, instruments or voices assist the student during singing.
  - Starting pitches only may be given by pitch pipe, accurately tuned piano or voice.
  - If cassettes are used, they must be rewind.
- LABELING THE AUDITION CASSETTE/CD**
  - Cassettes and CD's must be in commercial cases.
  - Only 1 singer may be recorded per cassette/cd.
  - Label **BOTH** the cassette/cd and case with only:
    - The singer's name
    - The singer's voice part
- RECORDING THE AUDITION CASSETTE/CD**
  - The recorded audition has 3 parts which must appear in the order listed:
    - SPOKEN INTRODUCTION.** At the beginning of the tape/cd, in a clear voice, the singer (not the teacher) must speak the following sentence, filling blanks with appropriate information: "My name is \_\_\_\_\_, I am in the \_\_\_\_\_ grade, and I am auditioning for the voice part of \_\_\_\_\_."
    - VOCALISE.** As indicated in the column at the left, elementary applicants will sing the two printed vocalises, using the two starting pitches indicated in the column at left. **The initial pitch must sound prior to the sung scale.** All vocalises must be sung a cappella. The vocalise is printed on the staff below. The student will introduce each vocalise by speaking the following sentence, filling the blank with the pitch name: "My starting pitch for this vocalise is \_\_\_\_\_."
    - "Music Alone Shall Live"** (see Application Form for solo). The song must be sung a cappella. Starting pitches are given in the column at the left. **The initial pitch must sound prior to the sung solo.** The student will introduce the solo by speaking the following sentence, filling the blank with the appropriate information: My starting pitch for "Music Alone Shall Live" is \_\_\_\_\_."

#### Vocalise Example:

♩ = 60 - 72



**♭ JUNIOR HIGH Audition Instructions ♯**

These directions are for the **JUNIOR HIGH HONOR CHOIR ONLY**.

Follow these directions exactly. **Failure to adhere to these specific instructions will result in disqualification of the auditioning singer.** Remember that each school or organization may submit up to 16 sets of audition materials. However, care should be taken to only submit tapes which represent a substantial amount of preparation.

**Junior High  
Honor Choir**

**STARTING PITCHES**  
(note: mC =middle C)

**Scales**

<u>Voice Part</u>	<u>Starting Pitches</u>
Soprano I	1. E above mC 2. A above mC
Soprano II	1. D above mC 2. G above mC
Alto	1. A below mC 2. E above mC
Tenor	1. E below mC 2. G below mC-
Bass I	1. B 8va below mC- 2. D below mC
Bass II	1. G 8va below mC 2. C 8va below mC

• May be sung descending first

**“Music Alone Shall Live”  
solo**

<u>Voice Part</u>	<u>Key</u>	<u>Starting Pitch</u>
Sop I	Bb	D above C1
Sop II	Ab	C above mC
Alto	F	A above mC
Tenor	Ab	middle C
Bass I	F	A below mC
Bass II	Eb	G below mC

1. APPLICATION FORM (see page 4 for Form)
  - Duplicate as needed. Complete thoroughly and legibly.
2. PREPARING TO RECORD THE AUDITION CASSETTE/CD
  - Use only new, quality cassette/cd and quality recording equipment.
  - Only the student’s voice may appear on the cassette/cd. At no time may sounds, instruments or voices assist the student during singing.
  - Starting pitches only may be given by pitch pipe, accurately tuned piano or voice.
  - If cassettes are used, they must be rewind.
3. LABELING THE AUDITION CASSETTE/CD
  - Cassettes and CD’s must be in commercial cases.
  - Only 1 singer may be recorded per cassette/cd.
  - Label **BOTH** the cassette/cd and case with only:
    - a. The singer’s name
    - b. The singer’s voice part
4. RECORDING THE AUDITION CASSETTE/CD
  - The recorded audition has 3 parts which must appear in the order listed:
    - I. **SPOKEN INTRODUCTION.** At the beginning of the tape/cd, in a clear voice, the singer (not the teacher) must speak the following sentence, filling blanks with appropriate information: “My name is \_\_\_\_\_, I am in the \_\_\_\_\_ grade, and I am auditioning for the voice part of \_\_\_\_\_.”
    - II. **SCALES** Junior High applicants will sing two diatonic scales (each spanning the range of an octave), using the starting pitches indicated for their voice part in the column to the left. Scales must be sung a cappella, using the vowel sound “Ah” Legato Style. **The initial pitch must sound prior to the sung scale.**

*Tempo: mm = 66 to 80 (one pitch = one beat).*  
*High Scale - ascend, breath, descend*  
*Low Scale - ascend, breath, descend*  
 “My starting pitch for the scale is \_\_\_\_\_.”
    - III. **“Music Alone Shall Live”** (see Application Form for solo).  
 The song must be sung a cappella. Starting pitches are given in the column at the left. **The initial pitch must sound prior to the sung solo.** The student will introduce the solo by speaking the following sentence, filling the blank with the appropriate information:  
 My starting pitch for “Music Alone Shall Live” is \_\_\_\_\_.”

2010 NJ Elementary & Junior High Honor Choirs  
NJ - Music Educators Association & American Choral Directors Association

Application Form

Please PRINT Legibly

STUDENT: Name Last First Grade

Address Street, City, State, Zip

Voice Part: Elementary (circle one): Treble I ..... Treble II Junior High (circle one): SI SII A T BI BII

If selected, I will memorize all my music before attending Honor Choir activities on April 24, 2010 (9:00 - 1:00 p.m.) & May 1, 2010 (9:00 - 6:00 pm). I understand that I must attend both of these dates for their full duration to be eligible to perform in the Honor Choir Concert.

Singer's Signature Date

Parent's/Guardian's Signature Date

DIRECTOR: Name Last First Member: NJMEA ACDA

Organization Address Street, City, State, Zip

Phone: (H) (W) (Cell)

Email:

Student's Sponsoring Organization (school, church, community chorus, etc.): Town:

I have read and accept the Teacher Responsibilities outlined on page 1 of this application packet.

Director's Signature Date

- Checklist: 1.) Thoroughly read all information. 2.) Include audition cassette/cd(s) as per instructions on preceding page. 3.) Include a completed application form for each student. 4.) Include one check to "NJMEA" (\$5 per student) 5.) Include a photocopy of your MENC or ACDA membership card (include expiration date). 6.) Postmark deadline for all materials is WEDNESDAY, JANUARY 13, 2010. Mail applications, tapes/cds & fees to:

2010 NJ Elementary Honor Choir Janelle Heise Pequanock Valley MS 493 Newark-Pompton Turnpike Pompton Plains, NJ 07444
2010 NJ Junior High Honor Choir Edel Thomas Kent Place School 42 Norwood Avenue Summit, NJ 07901

PLEASE NOTE:

To insure the safety and deliverability of your student tapes/cds, please use padded envelopes or boxes (preferred) and use appropriate postage.

When using USPS, please use Priority Mail.

Do not use Parcel Post to mail your tapes/cds.

Music Alone Shall Live (Die Musici) Anonymous Traditional German
All things shall perish from under the sky; Him - mel und Er - de mus - sen ver - gehn;
Mu - sic a - lone shall live, mu - sic a - lone shall live, a - ber die Mus - i - ci, a - ber die Mus - i - ci,
Mu - sic a - lone shall live, nev - er to die. a - ber die Mus - i - ci, blei - ben be - stehn.